

Log In/Log Out

1

POSitive Retail Manager - The Bluetique - Station: 1

File Edit Window Help

Invoice: 1373 By: POS Cashier: POS Date: 11/08/2010 Register: 1 - PL: Our Price

SCAN:

< >

Locate Item [INS] Menu [ESC] Suspend [Pause] Recall Suspended

Description	Quantity	Price	Dsc.%	Total

Bill To | Ship To | Note |

Quick Sale

↑ Show More Options [F2] Select Bill To [F3] Customer History [F4] Logout [F5]

↓ Adjust Quantity [F6] Time Clock [F7] Discount [F8] Void Transaction [F9]

LineTotals:	0.00	SubTotal:	0.00
Taxable:	0.00	- Coupon:	0.00
SalesTax:	0.00	- Deposit:	0.00
Item Count:	0.00	Total:	0.00

0.00

Tender [F10]

1



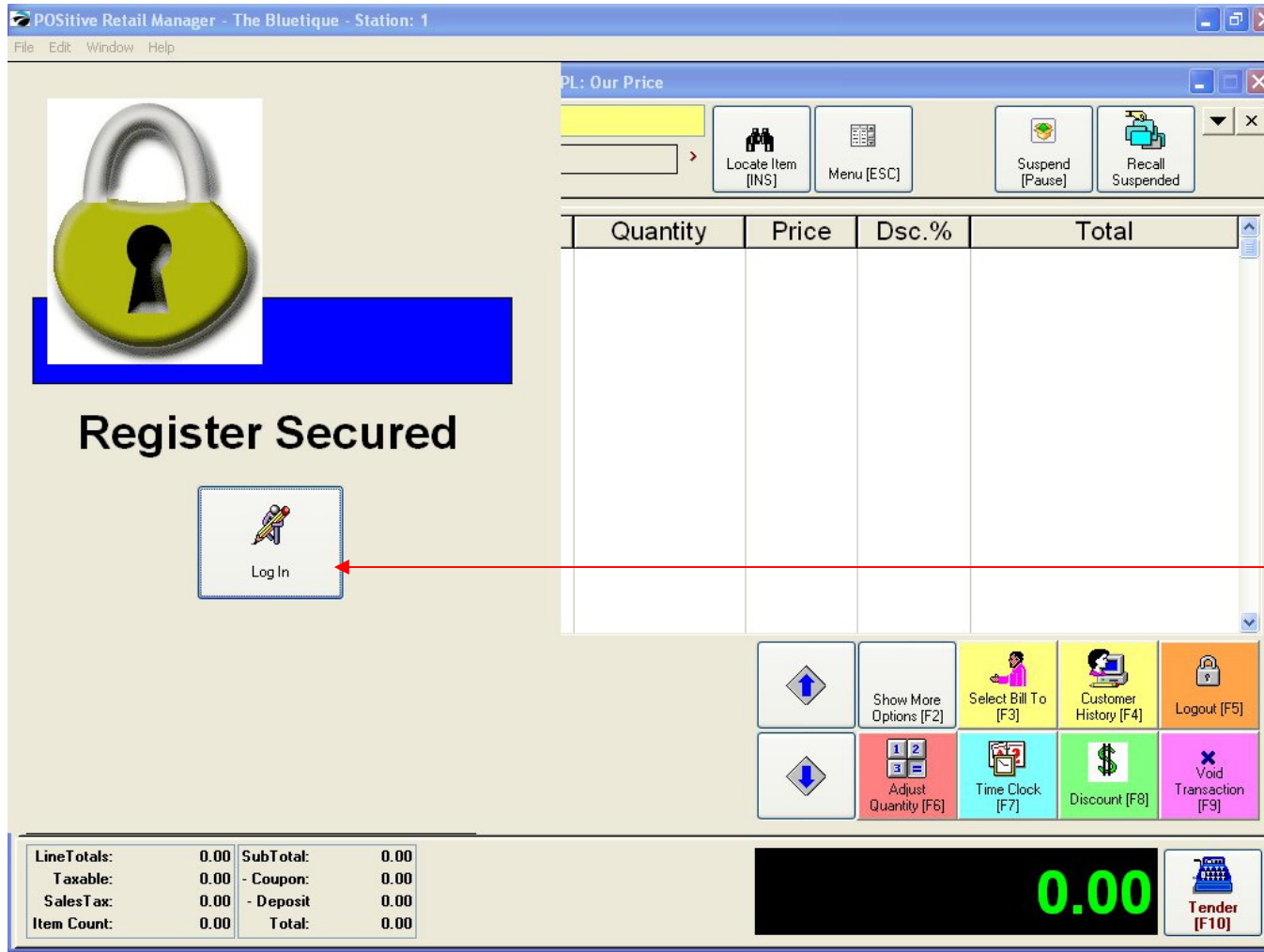
IN KEYBOARD SALES MODE:

To log out, or you go to Manager Mode:

1. SELECT LOGOUT (F5)

(NOTE: Only Teachers & Managers will have access to Manager Mode)

Log In/Log Out



IN KEYBOARD SALES MODE:

Register will be Secured.

1. To Log In, Select the LOG IN Button.

Log In/Log Out

POSitive Retail Manager - The Bluetique - Station: 1

File Edit Window Help

PL: Our Price

Locate Item [INS] Menu [ESC] Suspend [Pause] Recall Suspended

Quantity	Price	Dsc. %	Total
0.00	0.00	0.00	0.00

Register

Logon...

Employee ID Required For Invoices

Sales ID:

Password:

Go

Cancel

Keyboard Sales

LineTotals: 0.00 SubTotal: 0.00

Taxable: 0.00 - Coupon: 0.00

SalesTax: 0.00 - Deposit: 0.00

Item Count: 0.00 Total: 0.00

0.00

Tender [F10]

Logout [F5]

Void Transaction [F9]

Discount [F8]

Time Clock [F7]

Adjust Quantity [F6]

Show More Options [F2]

Select Bill To [F3]

Customer History [F4]

3

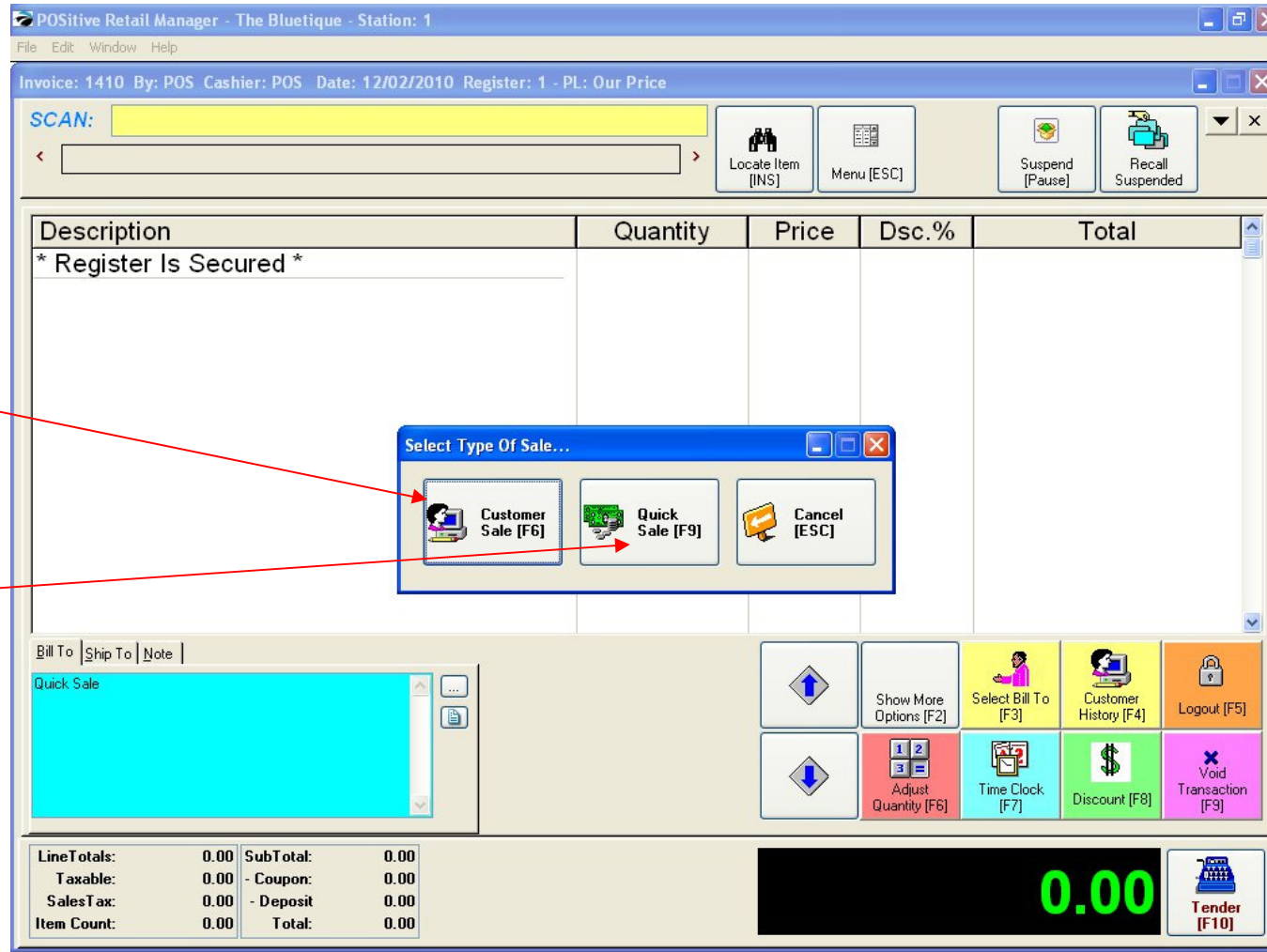
1

2

IN KEYBOARD SALES MODE:

1. Enter your Sales ID
2. Enter your Password
3. Select GO

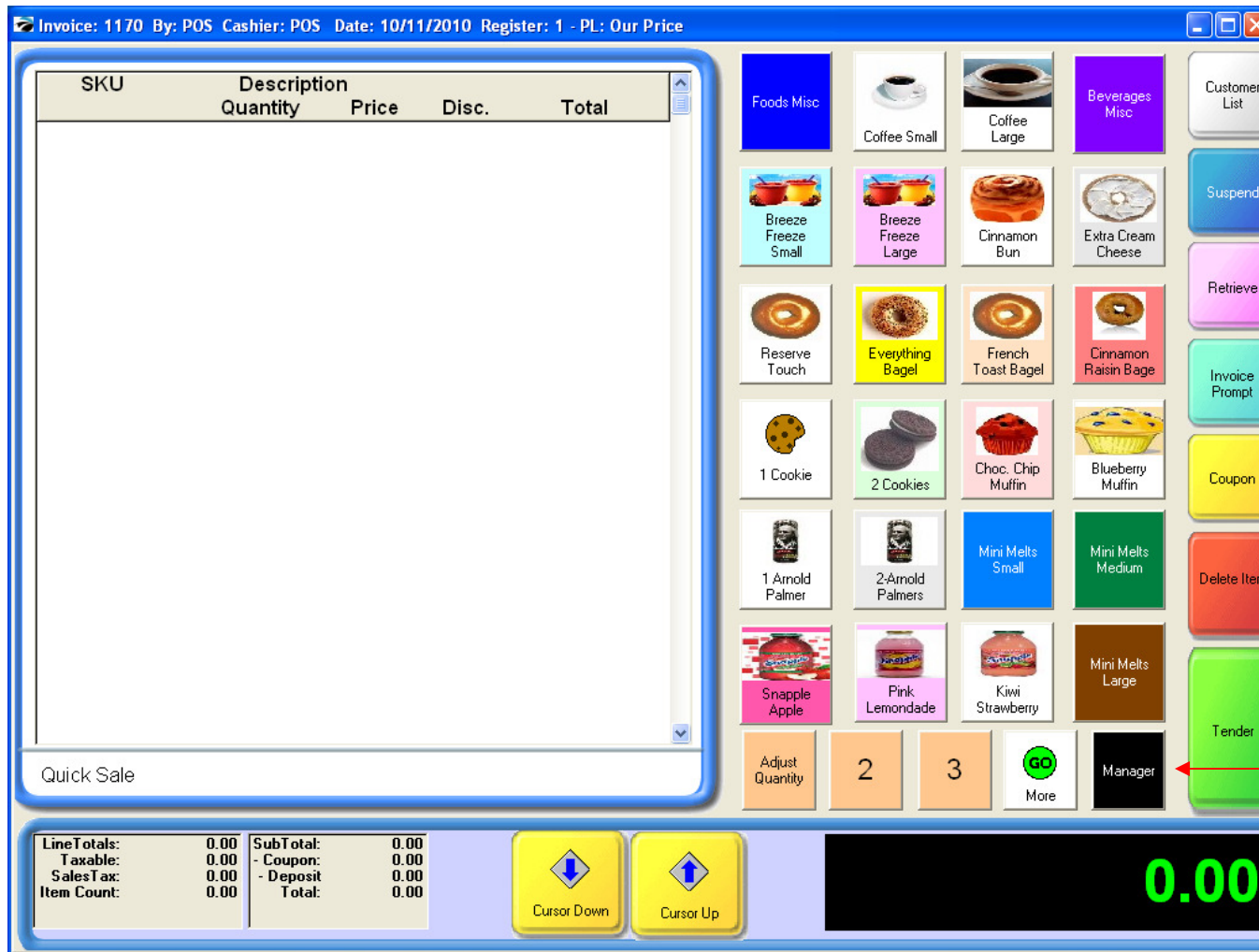
Log In/Log Out



IN KEYBOARD SALES MODE:

1. Select Customer Sale (F6) to have the sale linked to a customer.
2. Select Quick Sale (F9) to perform a quick sale.

Log In/Log Out



IN TOUCH SCREEN SALES MODE:

To Log in or Log Out, or you can go to Manager Mode:

1. Touch Manager Button



1. Select **Logout** Button
(NOTE: Only Teachers & Managers will have access to Manager Mode)



Register will be Secured.

1. To Log In, Select the LOG IN Button.

Log In/Log Out

Invoice: 1407 By: POS Cashier: POS Date: 12/02/2010 Register: 1 - PL: Our Price

SKU	Description	Quantity	Price	Disc.	Total
✓	* Register Is Secured *	0.00	0.00	0.00	

Logon...

Employee ID Required For Invoices

Sales ID:

Password:

Go

Cancel

Space Delete BackSpace 0 Enter

Q W E R T Y U I O P

A S D F G H J K L

Z X C V B N M , . -

Quick Sa

LineTotals:	0.00	SubTotal:	0.00
Taxable:	0.00	- Coupon:	0.00
SalesTax:	0.00	- Deposit:	0.00
Item Count:	0.00	Total:	0.00

Cursor Down Cursor Up

0.00

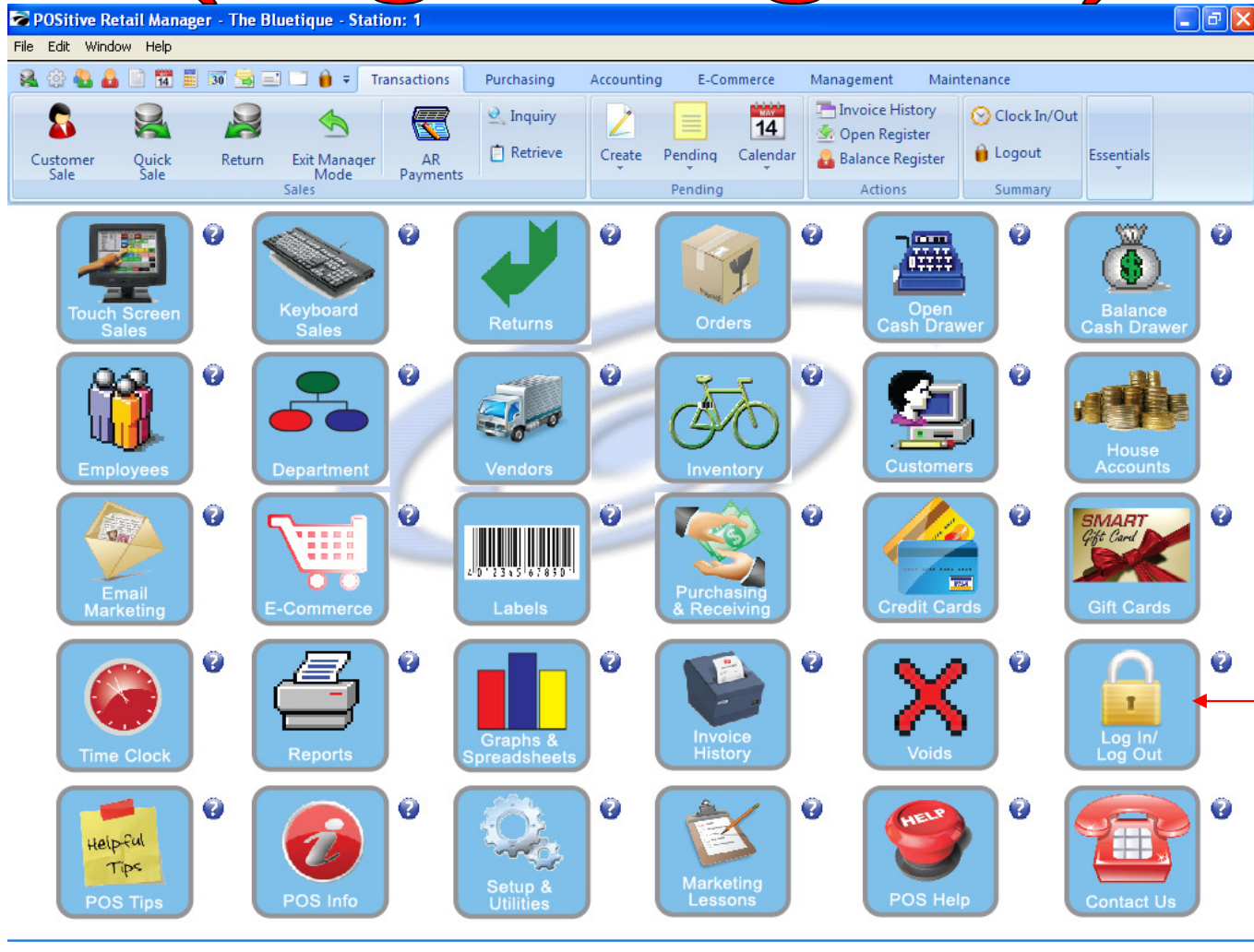


IN TOUCH SCREEN SALES MODE:

1. Enter your Sales ID
2. Enter your Password
3. Select GO

Manager Mode

(Log In/Log Out)

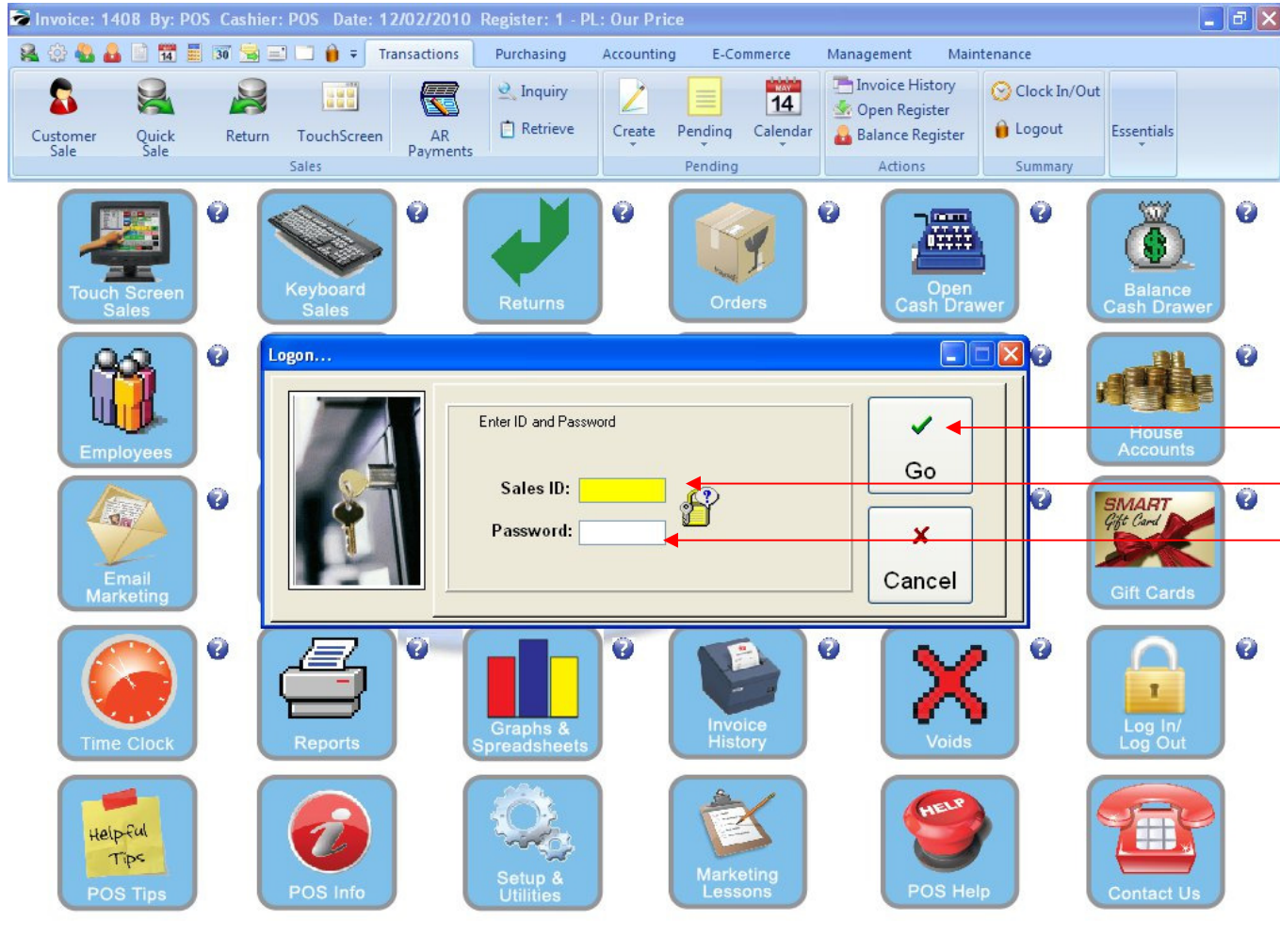


IN MANAGER MODE:

To Log in or Log out, go to Log In/Log Out.

1. Select Log In/Log Out Button

Log In/Log Out



IN MANAGER MODE:

1. Enter your Sales ID
2. Enter your Password
3. Select GO