

POS Sales Station

Guide to peripheral connections to your computer

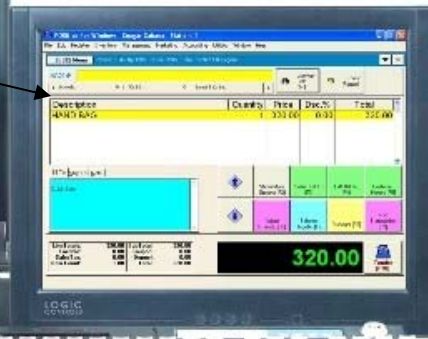
Computer



Customer Display



17" LCD Monitor



Receipt Printer



POS Keyboard



Cash Drawer

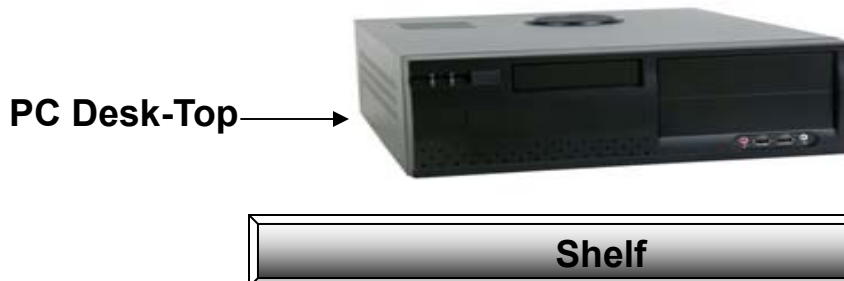
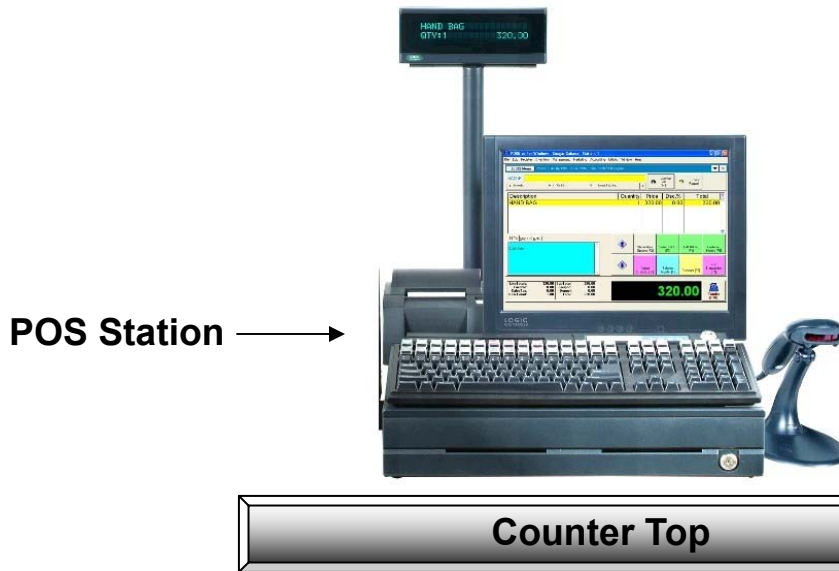


Laser Scanner



POS Sales Station

POS COMPUTER



* Plan appropriate place for the PC. It should be placed on a shelf directly below your POS Station. To hide all cables to the PC a 2-1/2" hole drilled into the counter is recommended. The PC must be placed in an accessible, and well vented area near a power source outlet. It is suggested to use a surge protector or better yet... An Uninterrupted Poser Supply (UPS-Battery)

POS Sales Station

CUSTOMER DISPLAY POLE



The POS-X pole can be placed in various locations for the customer to view. If space permits on the cash counter, place the pole directly in front of the register, if not on either side. (May be mounted w/screws.)



POS-X Pole Information

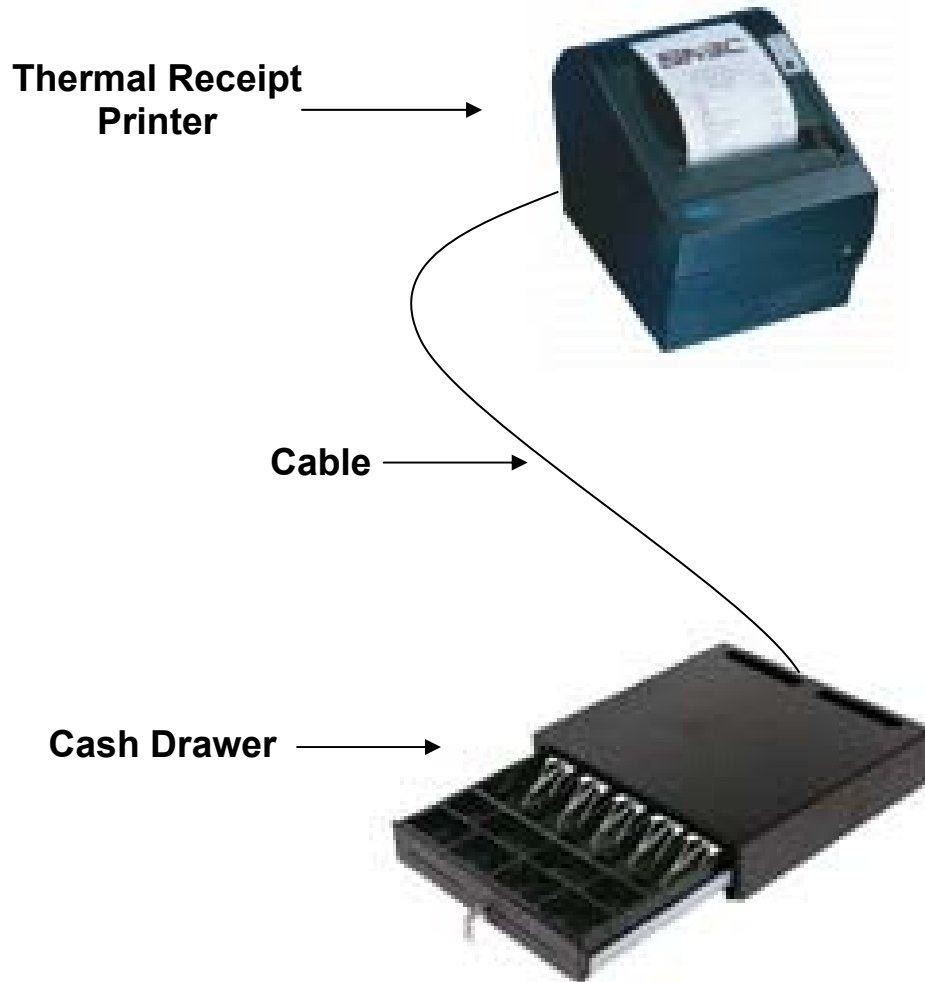
1. Feed cable through base and pole segments
2. Connect to Pole Display
3. Connect 9-pin serial port end to COM-1 Port
4. Connect USB extension for Power.



Com-1 (Display Pole)

POS Sales Station

CASH DRAWERS



* Just connect the male telephone-type end of the rear of the printer to the bottom of the cash drawer. Make sure all cables are managed properly and through the designated hole space. The cash drawer has two holes for cable management. Hide and tied down all cables.

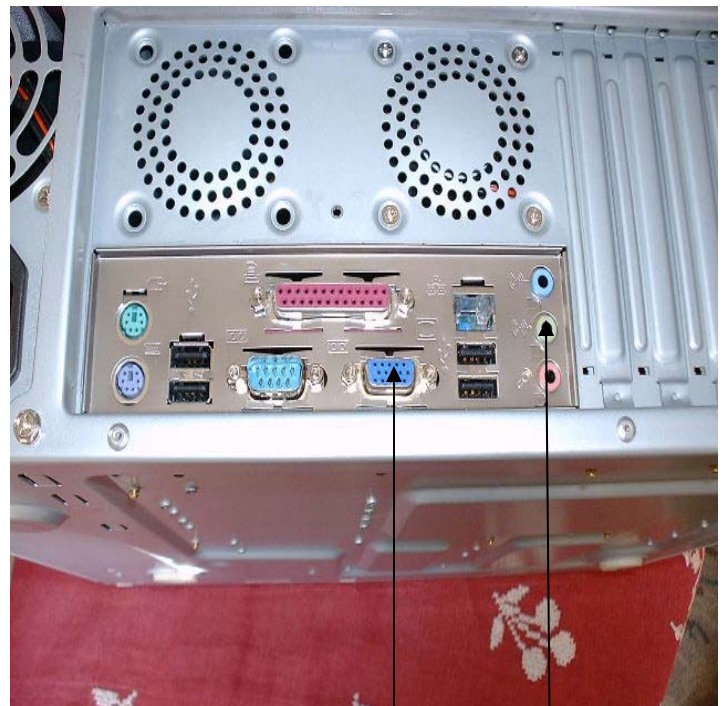
POS Sales Station

COLOR MONITORS



LCD Monitor Information

1. Female power cable end connects from Monitor to Power Source
2. Monitor male video cable connects to Blue female video interface on PC
3. Be sure to connect audio cable from Monitor to green port in back of PC.



Monitor

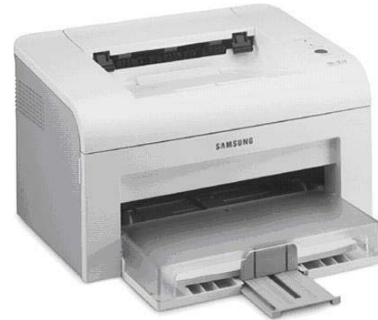
Audio

POS Sales Station

Receipt and Report Printers



Champ Thermal Printers



Report and Label Printer. Laser prints superior barcodes better

Receipt Printer Information

1. Connect printer cable centronix end clips to the rear of the printer. The male 32-pin end connects to PC's female parallel printer port. (refer to page 9 to see where on CPU)
2. A black, 3-pin power cable should be plugged into back of the printer. The other end is a rectangular power supply. The power supply needs a standard power cable plugged into a power source.
3. Lastly, a telephone-type cable with a male end connects to the female interface at the rear of printer. The other end then connects to the Cash Drawer (refer to page 4 of the guide).

Report Printer Information

1. Since the parallel port is taken by receipt printer, the alternative is a USB cable or Network Printer.



POS Sales Station

POS Smart Keyboard



← KP3700 Unitech programmable keyboard with intergraded credit card reader.

POS Keyboard Information

1. Unitech Keyboard connects directly to PC by USB cable.
2. The USB end plugs directly into any of the available USB ports on the back of the PC
3. 30 Hot Button keys come pre-programmed for fast, effortless, POS operation.
4. The key caps can be removed for easy button identification.



Keyboard USB Port

Keyboard USB Port

POS Sales Station

Laser Scanner



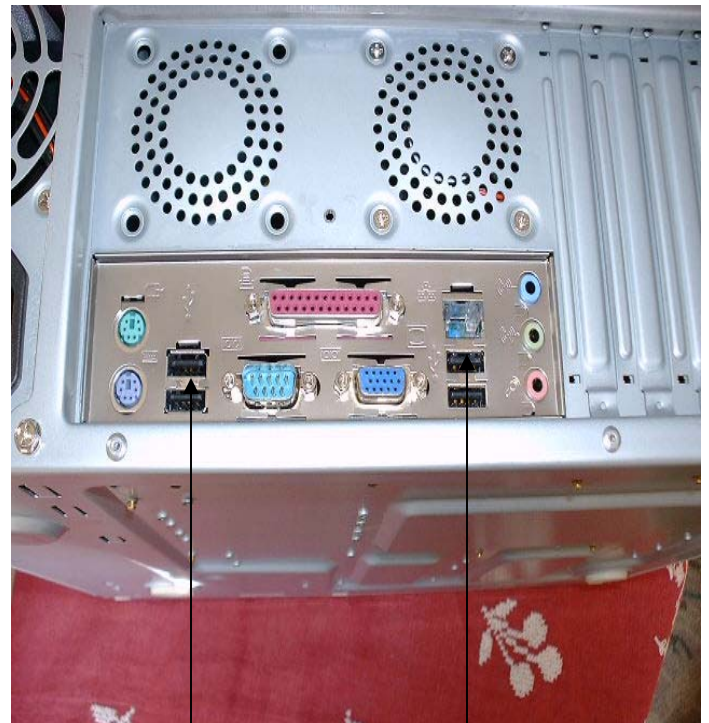
Voyager Scanner
(Need Assembly)



Orbit Scanner

Laser Scanner Information

1. All Scanners have USB cable connections to PC & telephone-type connection to scanners.
2. The USB end plugs directly into any of the available USB ports on the back of the PC
3. Voyager Scanner stand requires assembly. Both scanners are hands-free and will turn-on automatically when the infrared senses movement.



Scanner USB
Port

Scanner USB
Port

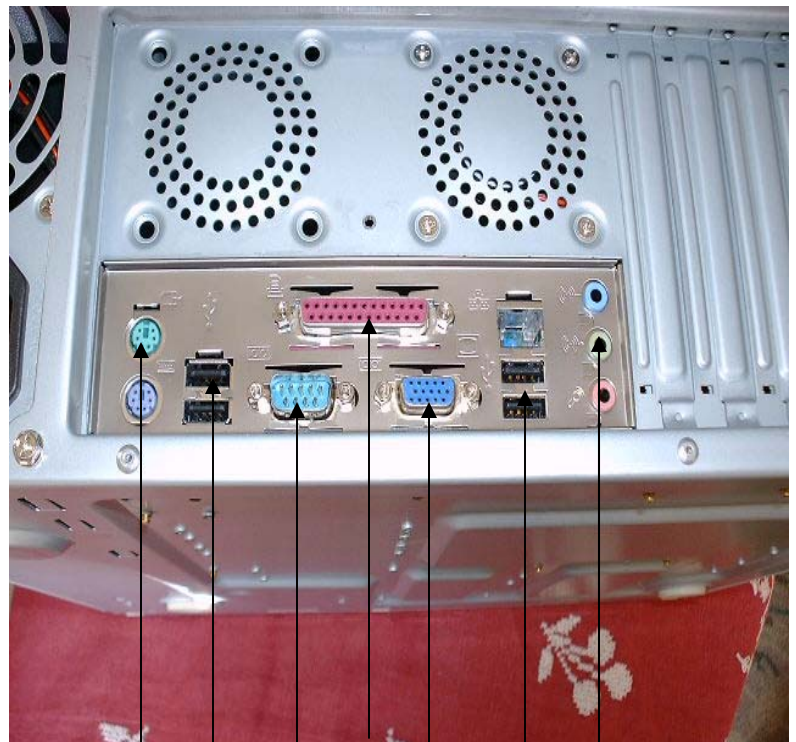
POS Sales Station

Final Set-up



Final Set-up Information

1. Make sure all wires and cables are hidden from visibility.
2. Recommend using zip-ties to keep all wires together
3. On top of the cash drawer, there are slot holes in which you can run the cables from the keyboard, printer, scanner and monitor so that they are hidden.
4. The best POS Sales Station is a clean looking POS Station



Mouse
USB
Com-1
Printer
Monitor
USB
Audio